

Hinges and locking solutions for the farming industry



PINET Industrie is specialised in designing and manufacturing hinges and locking devices

PINET INDUSTRIE KNOW-HOW

- Extensive range of standard product from stock
- Design and manufacture service available using customer's drawings and specifications
- Speedy prototypes for evaluation purposes
- Wide range of products with integrated functions
- Wide range of surface and decorative treatments available including - zinc plating, cathoporesis, anodisation, painting
- Large range of materials available including: steel, 304 and 316 stainless steel, aluminium...
- Small, medium and large production runs

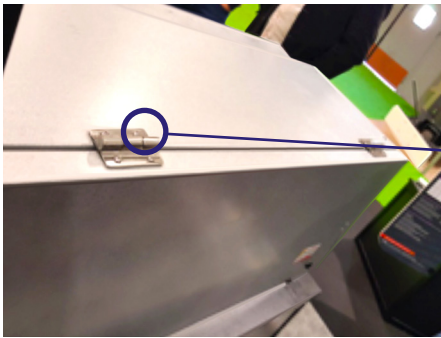
ADVANTAGES OF ROLLED METAL SHEET

- Reduced cost compared to stamped / machined parts
- Improved aesthetics over welded parts
- Capabilities to roll a hinge up to 6 mm thick
- Excellent vibration resistance during severe conditions of use
- Possibility to incorporate a plastic cover to hide screw heads for improved aesthetics

PINET Industrie proposes a large range of material: steel, aluminium, plastic...

Breeding

- **Standard products**



Heating systems for the poultry industry:

allows full control of the heater unit lid by using the hinges friction feature

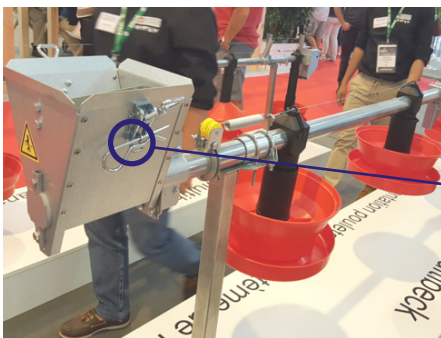
62-1-3712

Friction hinge in stainless steel



Robots for poultry farming

72-1-4219 and 72-1-4212
Aluminium profile hinges
and spring hinges



Feeding trough for poultry industry

16-7-4020

Adjustable toggle latches
with strike

- **Bespoke products**

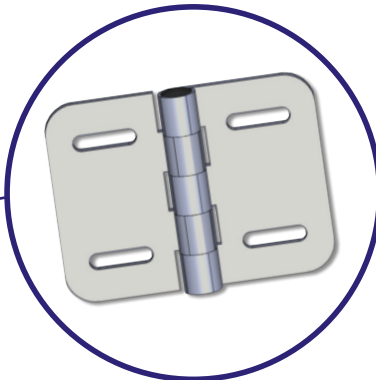


Vaccination system

Hinge with integrated stopper

Agricultural machinery

- **Bespoke products**



Straddler tractor engine covers

Heavy duty hinge 3.0mm stainless steel - adjustable



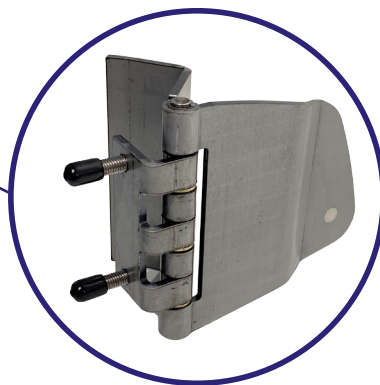
Tractor cabins

Heavy duty rolled knuckle hinge 6.0mm thickness with specific geometry



Tractor cabins

Heavy duty rolled knuckle hinge with integrated stop and plastic covers to improve aesthetics

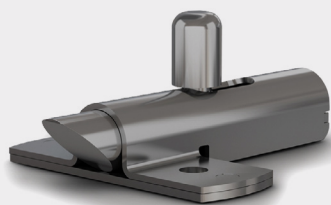


Telescopic trolley cabin

Heavy-gauge 3-wing hinge with crimped studs suitable for heavy loads

• Standard products

A stainless steel range that adapts perfectly to aggressive environments - outdoors, water, etc.



16-1-4265



14-1-3872



42-1-4352

