



## **CERNIERE CON PERNO A MOLLA NASCOSTA A**

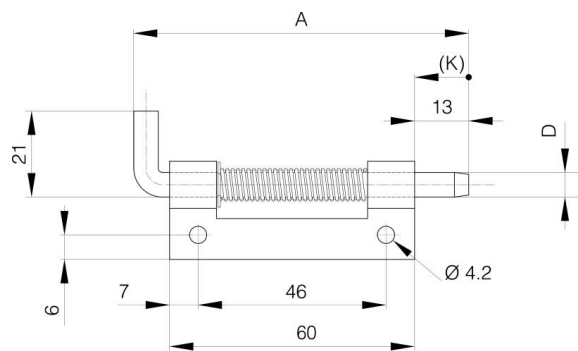
**12-1-4315**

Molla in acciaio inossidabile. Cerniere in acciaio grezzo e acciaio zincato con perno zincato.

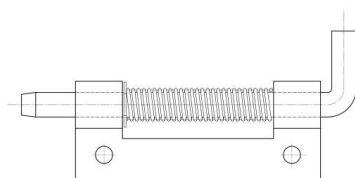
Perno in acciaio inossidabile 304 per cerniere in acciaio inossidabile.

Anello elastico in acciaio inossidabile 1.4122.

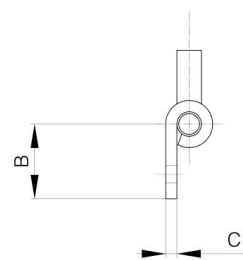
A	82 mm
Nota	tipo 1
Materiale	acciaio inossidabile 304
Peso (g)	46 g
B	18.2 mm
C	3 mm
D	6 mm
Finitura	naturale
Nouvelle référence	NEW



12-1-4313 & 12-1-4311 & 12-1-4315



12-1-4312 & 12-1-4310 & 12-1-4314



K

12 mm