



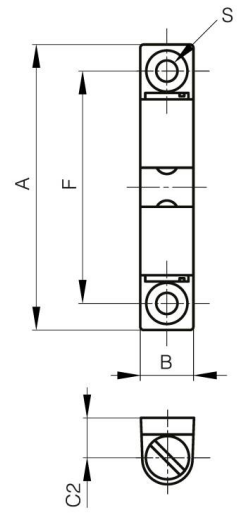
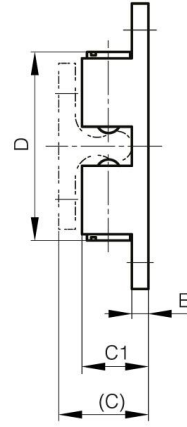
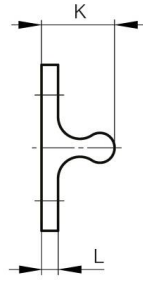
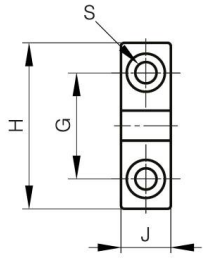
## **CHIUSURE A DOPPIA SFERA IN ACCIAIO INOSSIDABILE**

**16-7-4306**

La forza di presa non è regolabile.

Non ruotare la parte della fessura. Non avvitare o svitare le parti scanalate.

A	50 mm
Materiale	acciaio inossidabile 316
Peso (g)	30 g
B	10 mm
C	16.1 mm
S (diamètre trou)	4.2 mm
E	2.9 mm
D	31.5 mm
F	40 mm
G	20 mm
H	30 mm
Finitura	lucidato
J	9 mm
L	2.9 mm
C1	12.2 mm
C2	7.7 mm



K

13.2 mm