

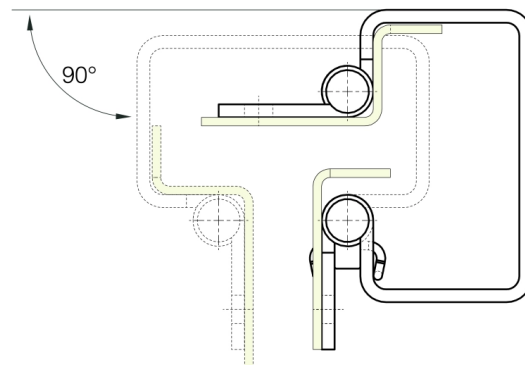
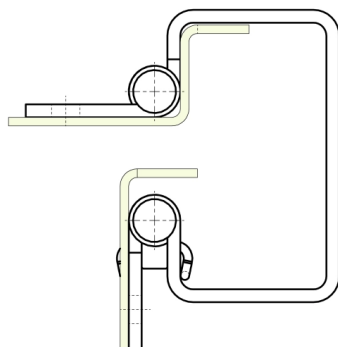
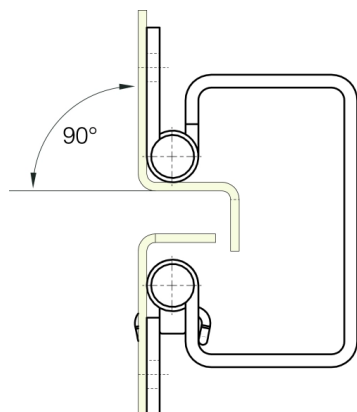
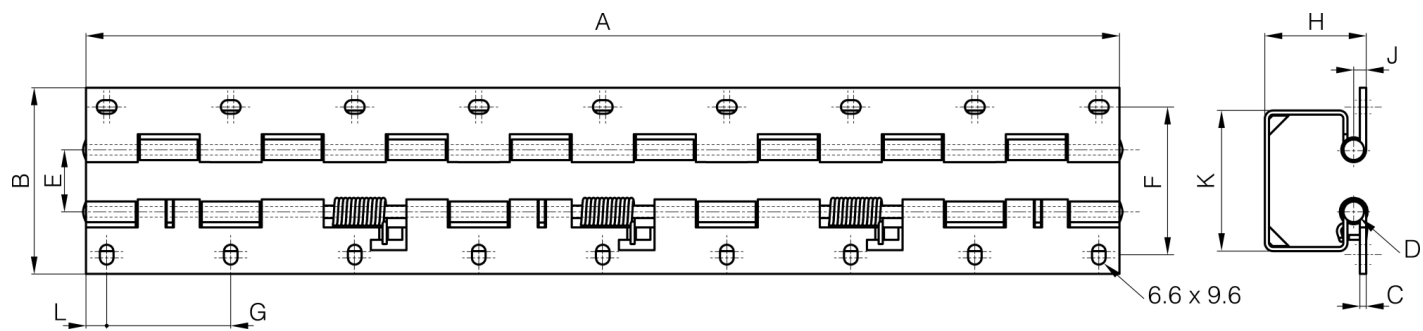
# **LONG CONCEALED SPRING HINGES - 180 ° OPENING**

## **42-1-4612**

Concealed hinge 180° opening with double axis for sheet metal applications.  
The springs make it possible to prioritize the 2 axis in order to have an adapted door movement.

Stainless steel pins and springs.

A (length)	500 mm
Material	304 stainless steel
Weight (g)	3300 g
B (width)	90 mm
C	3 mm
S	6.6 mm
E	30 mm
D (pin diameter)	6
F (pitch)	71.4 mm
G (pitch)	60 mm
H	49 mm
Finish	raw
L	10 mm
Nouvelle référence	NEW



K	68 mm
---	-------