



MULTI ANGLE LOCKING HINGE A WITH LEVER

15-7-3567

Easily adjusts the flap angle by toggling the lever.

Lock allows the hinge to be held in position from 0° to 180° in 10° increments.

The flap is temporarily unlocked while the lever is pushed.

The flap stays unlocked when the lever is lifted.

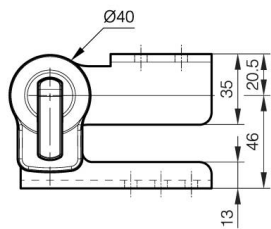
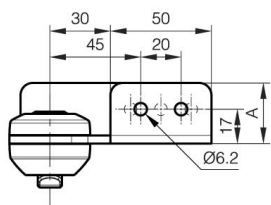
Hinge can be used with free axis hinge A (15-7-3568 or 15-7-3569).

Lever, pin, cover: plastic.

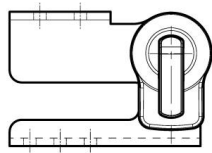
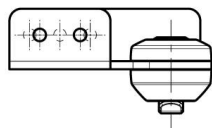
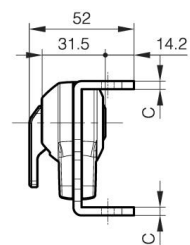
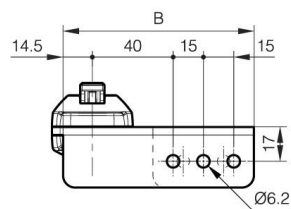
Recommended screws: M5.

Unlocking torque: 45 N.m.

A (length)	94.5 mm
Note	Type 2
Material	steel
Weight (g)	351 g
B (width)	30 mm
C	4 mm
Finish	nickel plated
Nouvelle référence	NEW



15-7-3566



15-7-3567

