



FULL EXTENSION BALL-BEARING SLIDE (3 PIECES), FRONT DISCONNECT AND POSITIVE LOCK

21-7-3572

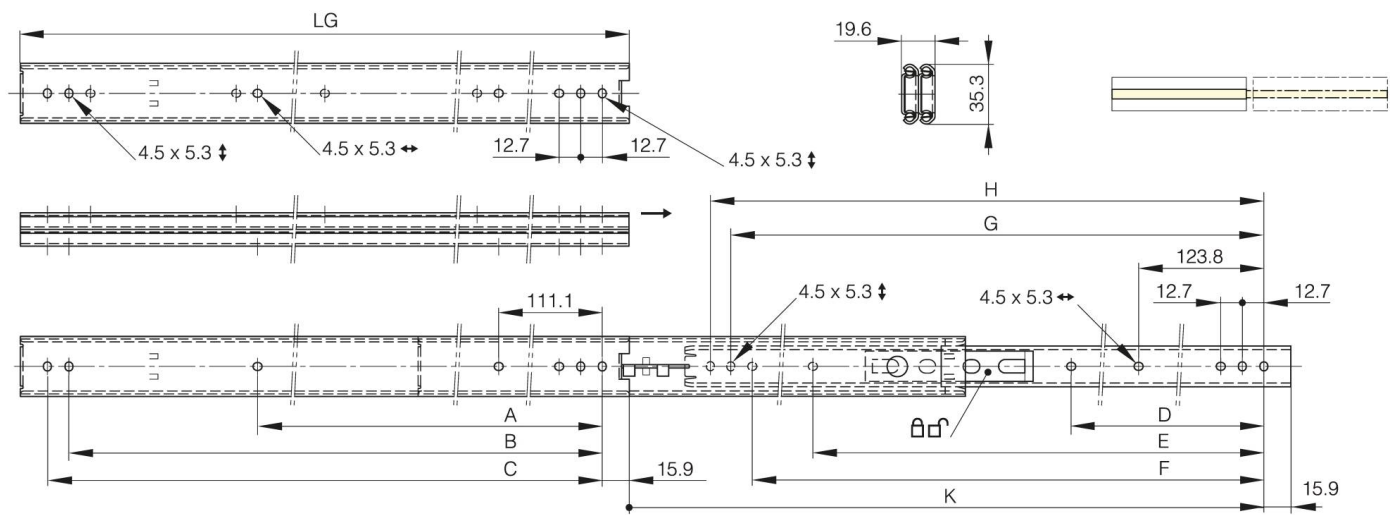
LG = slide length.

K = travel length.

CN = load rating (kg/pair).

Sold by the unit.

A (length)	403.2 mm
Material	304 stainless steel
Weight (g)	1150 g
B (width)	514.3 mm
C	527 mm
E	415.9 mm
D (pin diameter)	263.5
F (pitch)	501.6 mm
G (pitch)	514.3 mm
H	527 mm



K	574.1 mm
LG (slide length)	558.8 mm
CN (load rating)	45 kg/paire