





# CONCEALED SPRINGLOADED PIN HINGES B

## 12-1-3861

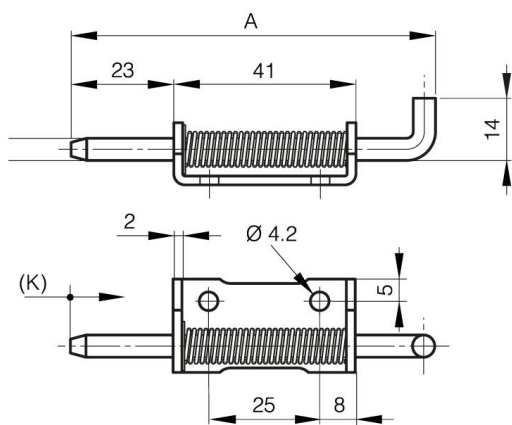
Stainless steel spring.

Zinc plated pin for hinges in raw steel and zinc plated steel.

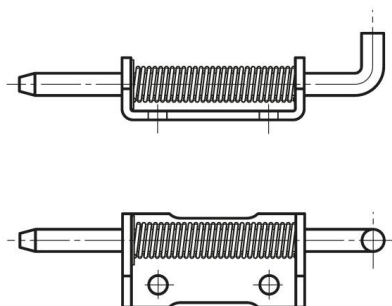
304 stainless steel pin for hinges in stainless steel.

Circlip in 1.4122 stainless steel.

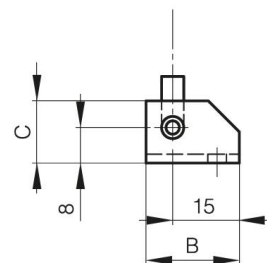
|                  |             |
|------------------|-------------|
| A (length)       | 82 mm       |
| Note             | type 1      |
| Material         | steel       |
| Weight (g)       | 39 g        |
| B (width)        | 21 mm       |
| C                | 14 mm       |
| D (pin diameter) | 5           |
| Finish           | zinc plated |



12-1-3951 & 12-1-3861 & 12-1-3863



12-1-3950 & 12-1-3860 & 12-1-3862



K

12 mm