

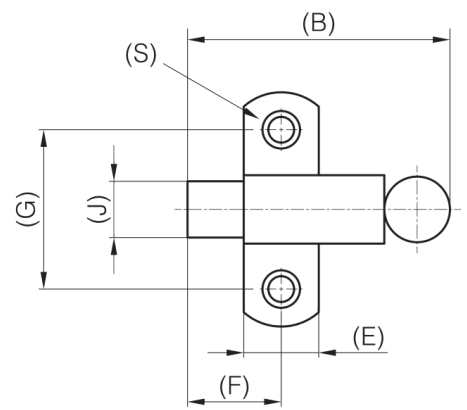
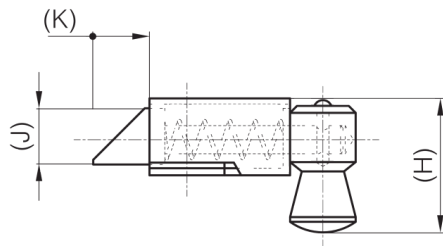
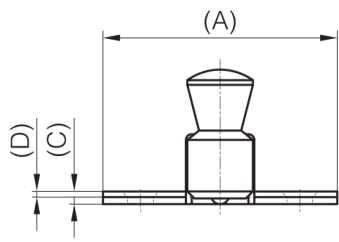


CONCEALED SPRINGLOADED LATCHES - BOLT "NOSE-DOWN"

16-1-4344

Slam latches.

A (length)	50 mm
Material	steel
Weight (g)	71 g
B (width)	56 mm
C	1.5 mm
S	5.5 mm
E	16 mm
D (pin diameter)	1.2 mm
F (pitch)	20 mm
G (pitch)	34 mm
H	32.8 mm
Finish	zinc plated
J	12 mm
Nouvelle référence	NEW



K	12 mm
---	-------