



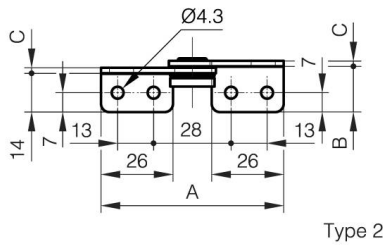
TORQUE HINGE A

15-7-3583

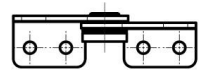
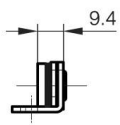
Provides torque stability in both directions.
For pair using: please use the same torque in both hinges.
When installing, ensure that both hinge axis are aligned.
Cycle life: 20,000 cycles.
Operating temperature: 0°C - 40°C.
For horizontal applications.

A	80 mm
----------	-------

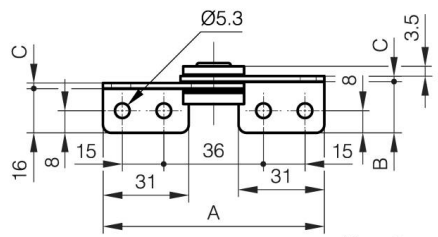
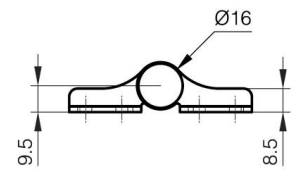
Note	Type 2
Material	430 stainless steel
Weight (g)	65 g
Torque	4.5 N.m N.m
B	18.5 mm
C	2 mm
Finish	polished
Nouvelle référence	NEW



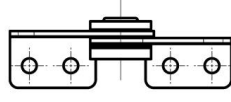
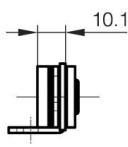
Type 2



Type 1



Type 2



Type 1

