



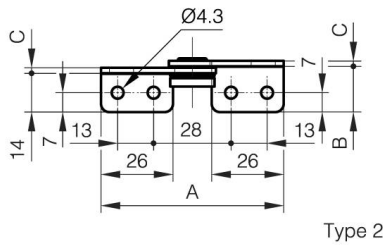
## **TORQUE HINGE A**

**15-7-3580**

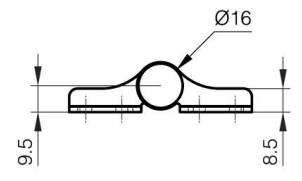
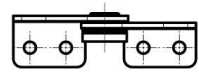
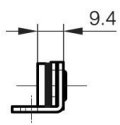
Provides torque stability in both directions.  
For pair using: please use the same torque in both hinges.  
When installing, ensure that both hinge axis are aligned.  
Cycle life: 20,000 cycles.  
Operating temperature: 0°C - 40°C.  
For horizontal applications.

<b>A</b>	66 mm
----------	-------

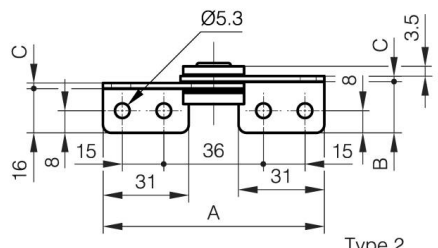
<b>Note</b>	Type 1
<b>Material</b>	430 stainless steel
<b>Weight (g)</b>	30 g
<b>Torque</b>	3.0 N.m N.m
<b>B</b>	16.5 mm
<b>C</b>	2 mm
<b>Finish</b>	polished
<b>Nouvelle référence</b>	NEW



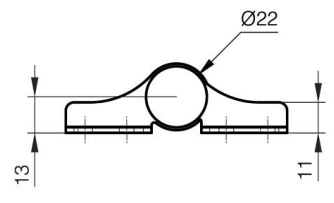
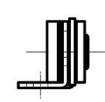
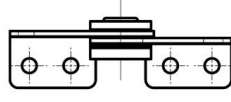
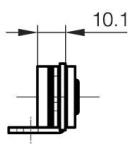
Type 2



Type 1



Type 2



Type 1