



## **MULTI ANGLE LOCKING HINGE B WITH LEVER**

**15-7-3571**

Easily adjusts the flap angle by toggling the lever.

Lock allows the hinge to be held in position from 0° to 180° in 10° increments.

The flap is temporarily unlocked while the lever is pushed.

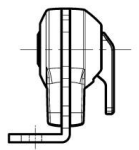
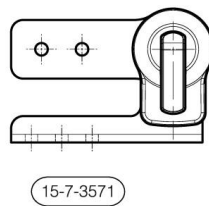
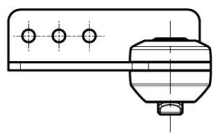
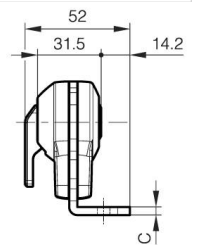
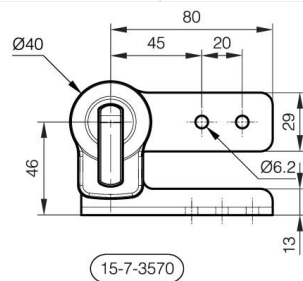
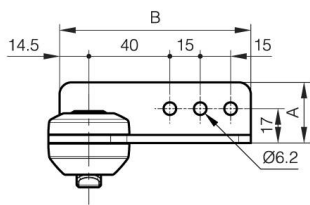
The flap stays unlocked when the lever is lifted.

Hinge can be used with free axis hinge B (15-7-3572 or 15-7-3573).

Lever, pin, cover: plastic.

Recommended screws: M5.  
 Unlocking torque 45 N.m.

<b>A</b>	30 mm
<b>Note</b>	Type 2
<b>Material</b>	steel
<b>Weight (g)</b>	305 g
<b>B</b>	94.5 mm
<b>C</b>	4 mm
<b>Finish</b>	nickel plated
<b>Nouvelle référence</b>	NEW



15-7-3570

15-7-3571