



## **MULTI ANGLE LOCKING HINGE A WITH LEVER**

**15-7-3566**

Easily adjusts the flap angle by toggling the lever.

Lock allows the hinge to be held in position from 0° to 180° in 10° increments.

The flap is temporarily unlocked while the lever is pushed.

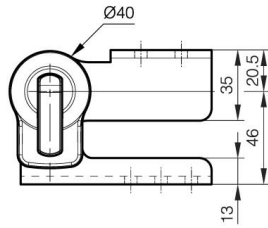
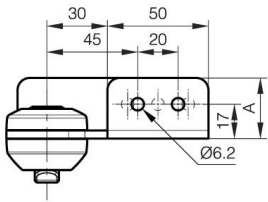
The flap stays unlocked when the lever is lifted.

Hinge can be used with free axis hinge A (15-7-3568 or 15-7-3569).

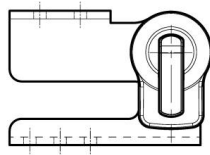
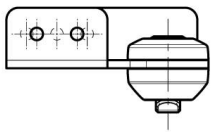
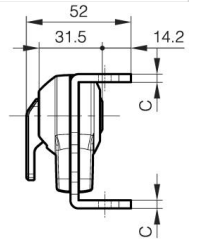
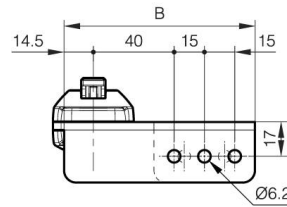
Lever, pin, cover: plastic.

Recommended screws: M5.  
 Unlocking torque: 45 N.m.

<b>A</b>	94.5 mm
<b>Note</b>	Type 1
<b>Material</b>	steel
<b>Weight (g)</b>	351 g
<b>B</b>	30 mm
<b>C</b>	4 mm
<b>Finish</b>	nickel plated
<b>Nouvelle référence</b>	NEW



15-7-3566



15-7-3567

