



## **SQUARE HINGES WITH TWO OFFSET LEAVES AND RIVETED PIN - WITH 6 HOLES**

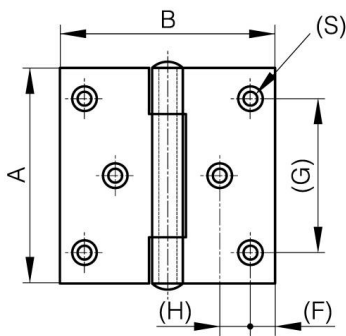
**52-1-4111**

Riveted pin.

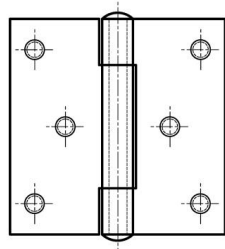
**A**

80 mm

<b>Note</b>	with M5 studs
<b>Material</b>	304 stainless steel
<b>Weight (g)</b>	182 g
<b>B</b>	80 mm
<b>C</b>	2.5 mm
<b>S (hole diameter)</b>	4.5 mm
<b>D (pin diameter)</b>	6
<b>F (pitch)</b>	8 mm
<b>G (pitch)</b>	60 mm
<b>H (height or starting holes)</b>	12.5 mm
<b>Finish</b>	raw
<b>Nouvelle référence</b>	NS



52-1-3615 & 52-1-3617



52-1-4108 & 52-1-4111

