



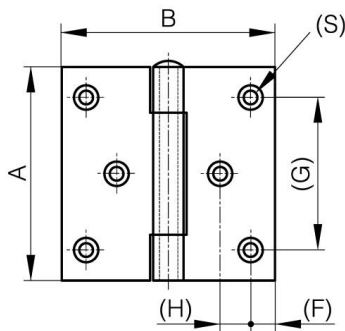
**SQUARE HINGES WITH TWO OFFSET
LEAVES AND REMOVABLE PIN - WITH 6
HOLES**

52-1-4107

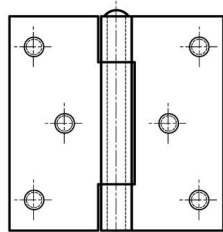
Removable pin.

A	70 mm
---	-------

Note	with M5 studs
Material	304 stainless steel
Weight (g)	174 g
B	70 mm
C	2 mm
S (hole diameter)	4.5 mm
D (pin diameter)	6
F (pitch)	8 mm
G (pitch)	50 mm
H (height or starting holes)	10 mm
Finish	raw
Nouvelle référence	NS



52-1-3614 & 52-1-3616



52-1-4107 & 52-1-4110

