



CONCEALED HINGE WITH REMOVABLE PIN - 110° OPENING

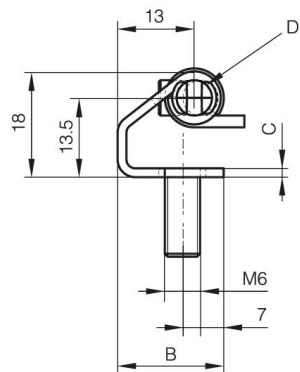
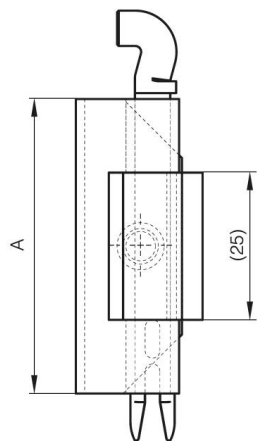
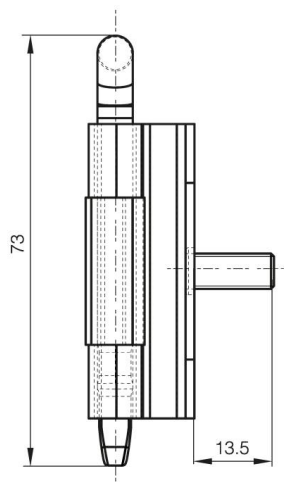
60-1-3918

Male leaf in raw steel.

Female leaf in zinc plated steel with stud.

Removable pin in POM.

A (length)	50 mm
Note	male leaf in raw steel
Material	steel
Weight (g)	42 g
B (width)	18 mm
C	1.5 mm
Finish	raw / zinc plated
Pin material	POM pin



16-7-4293

