



## **CLEAN ROOM LIFT-OFF HINGES - 65 X 60 MM**

**14-7-3878**

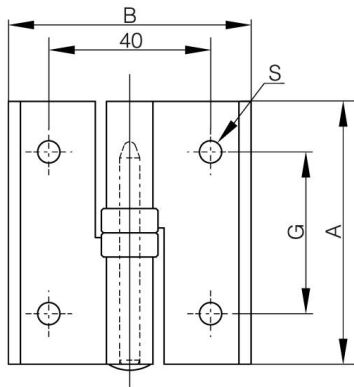
No metal-to-metal contact. Polyacetal bushings minimize particles.

Door size: max. W600 x L800.

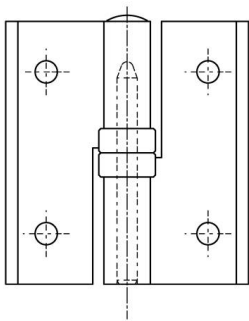
Door weight: max. 8 kg/pair.

303 stainless steel pin.

A (length)	65 mm
Note	type 2
Material	aluminium
Weight (g)	49 g
B (width)	60 mm
C	3.5 mm
S	5.5 mm
D (pin diameter)	5
G (pitch)	40 mm
Finish	anodised



14-7-3877



14-7-3878

