



ZINC DIE-CAST DUAL BALL CATCHES

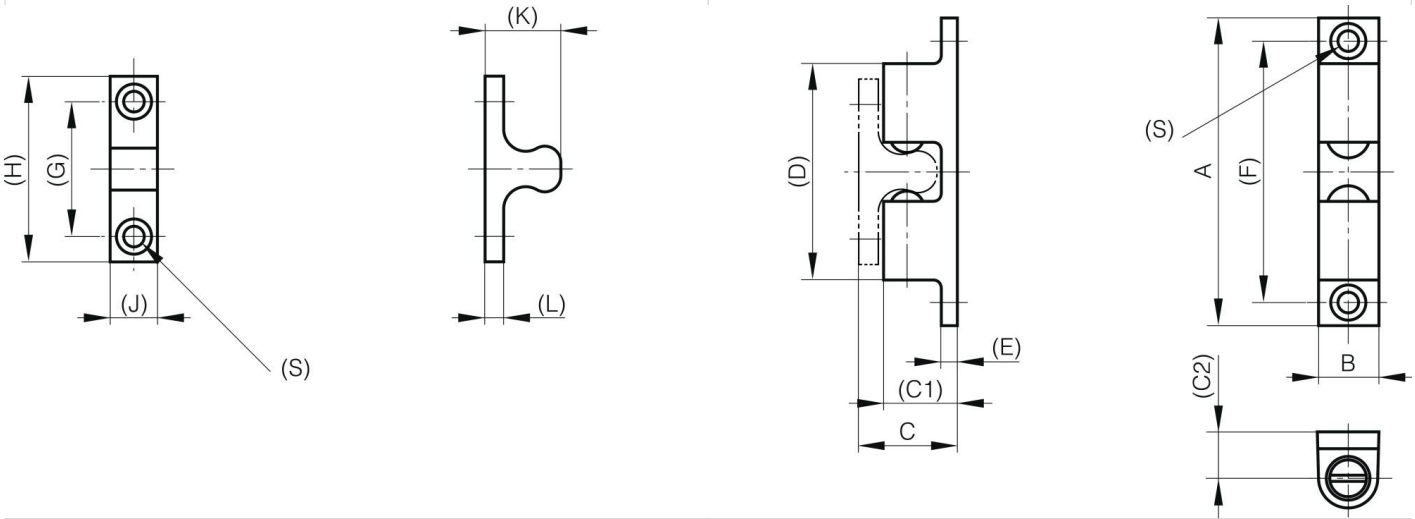
16-7-4213

Body: zinc die-cast, chrome plated.

Balls: steel.

A	70 mm
Material	zinc die-cast
Weight (g)	70 g

B	13.5 mm
C	21.2 mm
S (hole diameter)	4.2 mm
E (knuckle or thickness)	4 mm
D (pin diameter)	49
F (pitch)	60 mm
G (pitch)	30 mm
H (height or starting holes)	42 mm
Finish	chrome plated
J	10.5 mm
L	3 mm
C1	17 mm
C2	11 mm



K	17.2 mm
----------	---------