



ZINC DIE-CAST DUAL BALL CATCHES

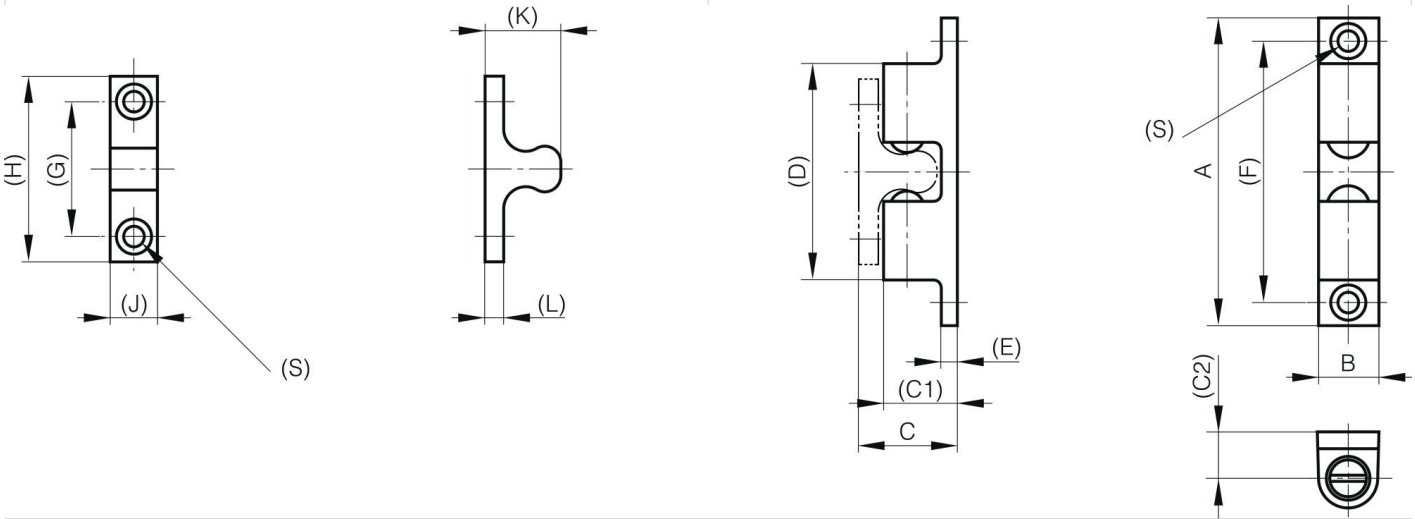
16-7-4212

Body: zinc die-cast, chrome plated.

Balls: steel.

A	50 mm
Material	zinc die-cast
Weight (g)	26 g

B	10 mm
C	16 mm
S (hole diameter)	4.2 mm
E (knuckle or thickness)	3 mm
D (pin diameter)	29.8
F (pitch)	40 mm
G (pitch)	20 mm
H (height or starting holes)	30 mm
Finish	chrome plated
J	9 mm
L	2.5 mm
C1	12.5 mm
C2	7.4 mm



K	12.3 mm
----------	---------