



FULL EXTENSION BALL-BEARING SLIDE (3 PIECES), FRONT DISCONNECT AND POSITIVE LOCK

21-7-3573

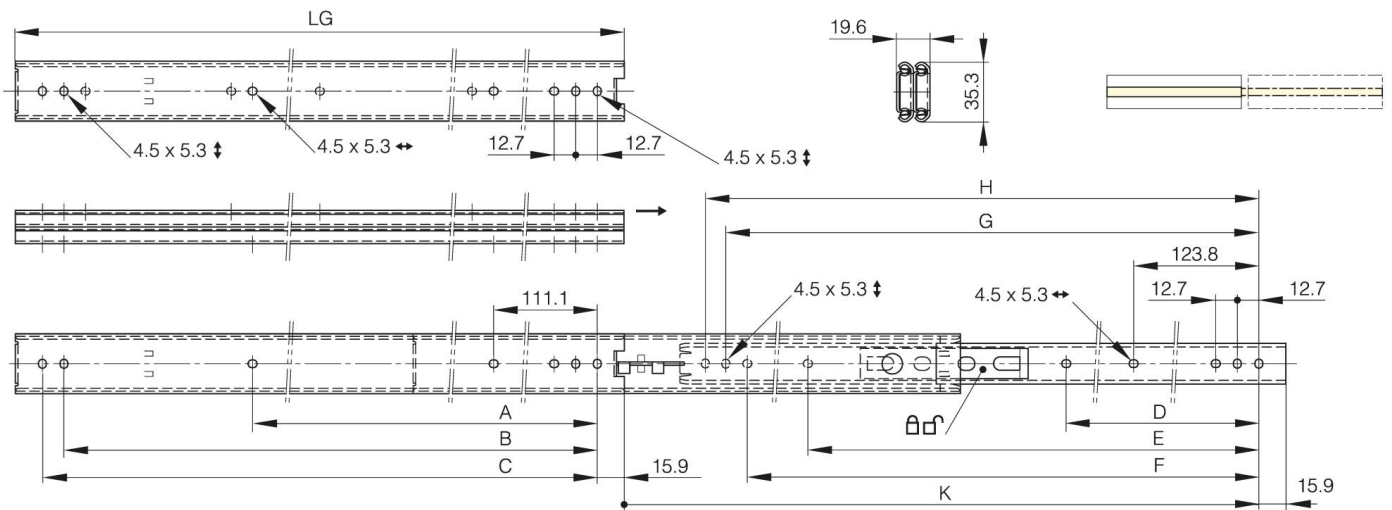
LG = slide length.

K = travel length.

CN = load rating (kg/pair).

Sold by the unit.

A	454 mm
Material	304 stainless steel
Weight (g)	1280 g
B	565.1 mm
C	577.8 mm
E (knuckle or thickness)	466.7 mm
D (pin diameter)	288.9
F (pitch)	552.4 mm
G (pitch)	565.1 mm
H (height or starting holes)	577.8 mm
Finish	raw



K	624.9 mm
LG (slide length)	609.6 mm
CN (load rating)	42 kg/paire