



FULL EXTENSION BALL-BEARING SLIDE (3 PIECES), FRONT DISCONNECT AND POSITIVE LOCK

21-7-3570

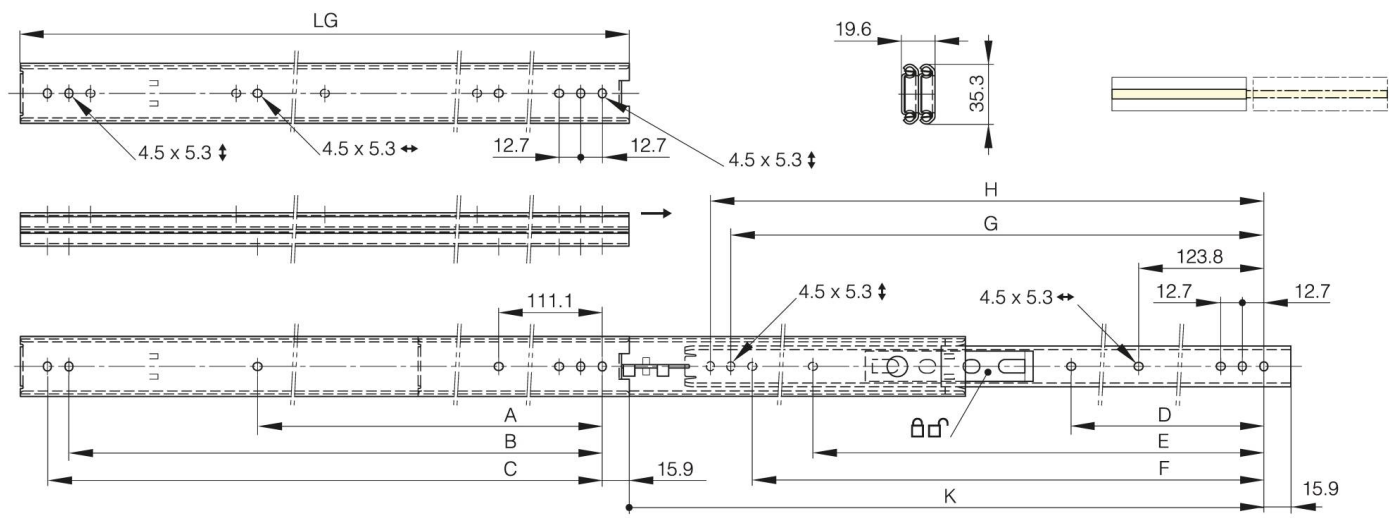
LG = slide length.

K = travel length.

CN = load rating (kg/pair).

Sold by the unit.

A (length)	301.6 mm
Material	304 stainless steel
Weight (g)	950 g
B (width)	412.7 mm
C	425.4 mm
E	0 mm
D (pin diameter)	212.7
F (pitch)	400 mm
G (pitch)	412.7 mm
K	472.5 mm



K	472.5 mm
LG (slide length)	457.2 mm
CN (load rating)	53 kg/paire