



FULL EXTENSION BALL-BEARING SLIDE (3 PIECES), FRONT DISCONNECT AND POSITIVE LOCK

21-7-3569

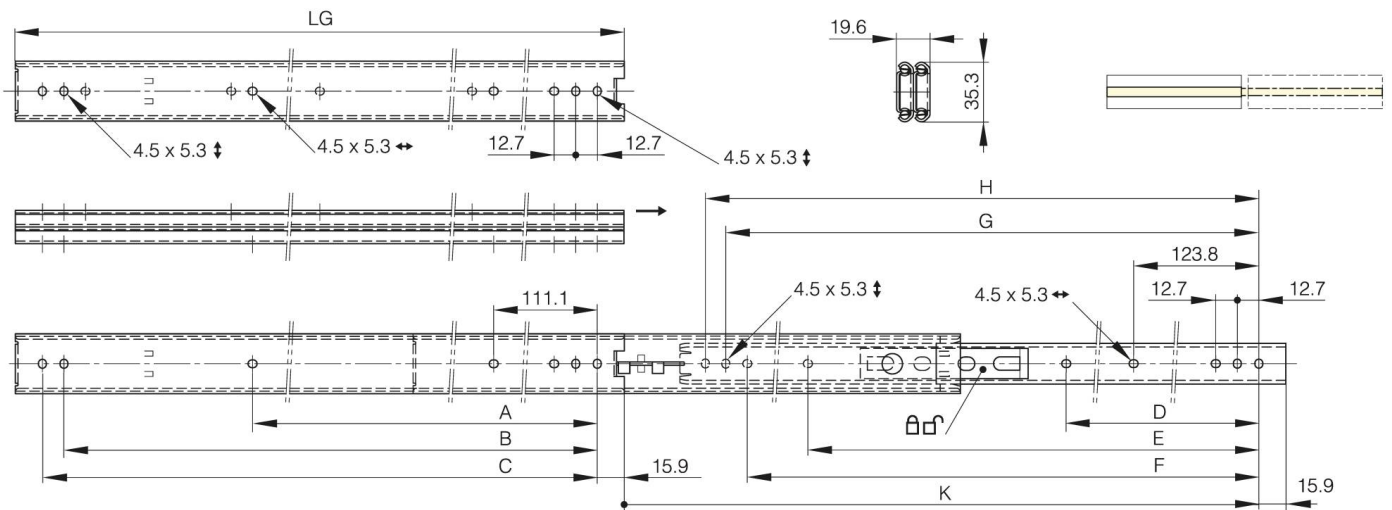
LG = slide length.

K = travel length.

CN = load rating (kg/pair).

Sold by the unit.

A	250.8 mm
Material	304 stainless steel
Weight (g)	840 g
B	361.9 mm
C	374.6 mm
E (knuckle or thickness)	0 mm
D (pin diameter)	0
F (pitch)	349.2 mm
G (pitch)	361.9 mm
H (height or starting holes)	374.6 mm
Finish	raw



K	421.7 mm
LG (slide length)	406.4 mm
CN (load rating)	57 kg/paire