



## ZINC DIE-CAST LIFT-OFF HINGES 80 MM

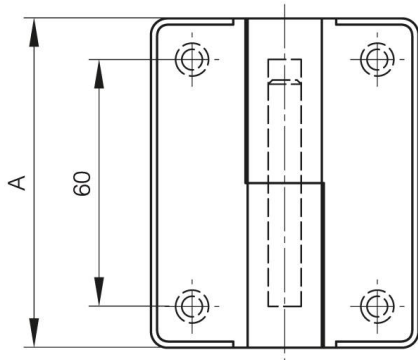
**14-7-3814**

Fixing by 2 threaded studs. Stainless steel pin.

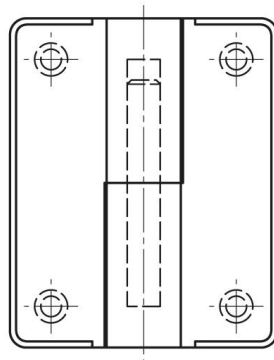
Leaves blocked with grub screw. Unscrew it to get a lift-off hinge.

|                 |               |
|-----------------|---------------|
| <b>A</b>        | 80 mm         |
| <b>Note</b>     | type 1        |
| <b>Material</b> | zinc die-cast |

|                         |       |
|-------------------------|-------|
| <b>Weight (g)</b>       | 330 g |
| <b>B</b>                | 65 mm |
| <b>C</b>                | 8 mm  |
| <b>D (pin diameter)</b> | 8     |
| <b>G (pitch)</b>        | 60 mm |
| <b>Finish</b>           | black |



14-7-3814



14-7-3813

