



## ZINC DIE-CAST DUAL BALL CATCHES

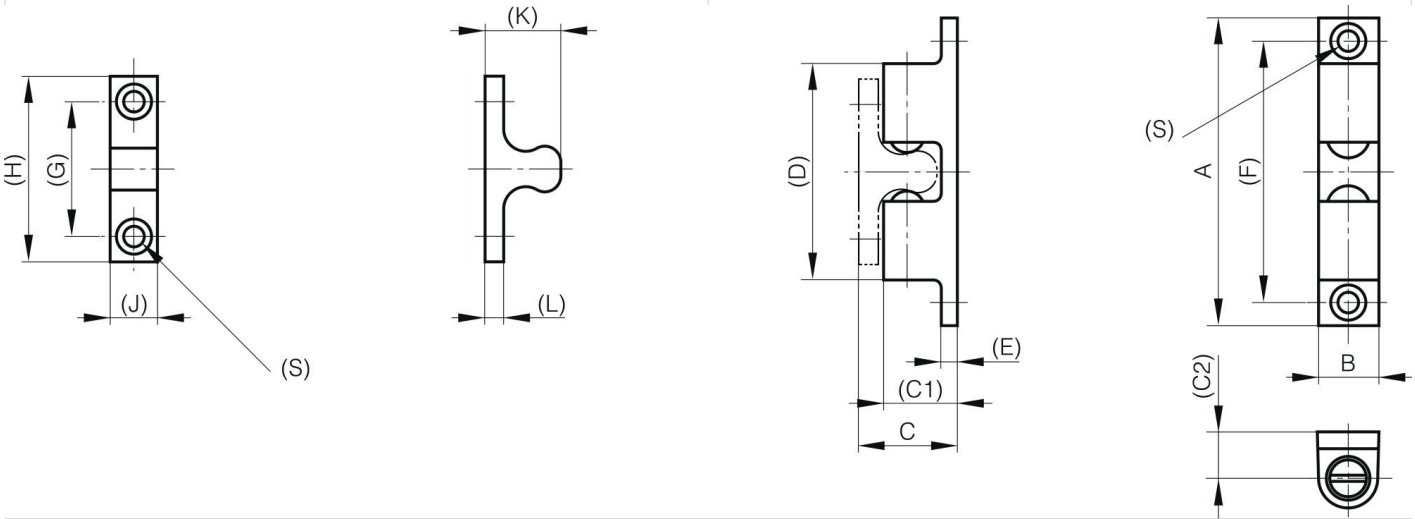
**16-7-4211**

Body: zinc die-cast, chrome plated.

Balls: steel.

<b>A</b>	42.5 mm
<b>Material</b>	zinc die-cast
<b>Weight (g)</b>	16 g

<b>B</b>	8 mm
<b>C</b>	14 mm
<b>S (hole diameter)</b>	3.2 mm
<b>E (knuckle or thickness)</b>	2.5 mm
<b>D (pin diameter)</b>	26.7
<b>F (pitch)</b>	35 mm
<b>G (pitch)</b>	16 mm
<b>H (height or starting holes)</b>	25 mm
<b>Finish</b>	chrome plated
<b>J</b>	7.5 mm
<b>L</b>	2.5 mm
<b>C1</b>	10 mm
<b>C2</b>	6.5 mm



<b>K</b>	11.3 mm
----------	---------