



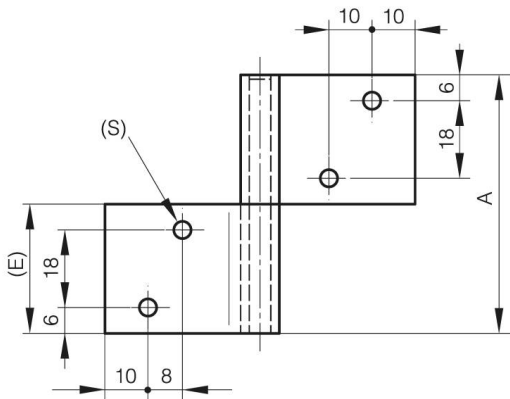
PIN HINGE WITH ONE CRANKED LEAF

12-1-3682

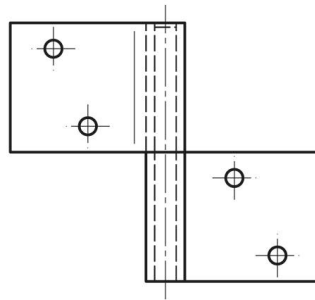
Produced mainly in stainless steel, for a complete description of the materials contact us.

| | |
|-----------------|---------------------|
| A | 60 mm |
| Note | type 2 |
| Material | 304 stainless steel |

| | |
|---------------------------------|-------|
| Weight (g) | 70 g |
| B | 72 mm |
| C | 2 mm |
| S (hole diameter) | 4 mm |
| E (knuckle or thickness) | 30 mm |
| D (pin diameter) | 5 |
| Finish | raw |



12-1-3683



12-1-3682

