



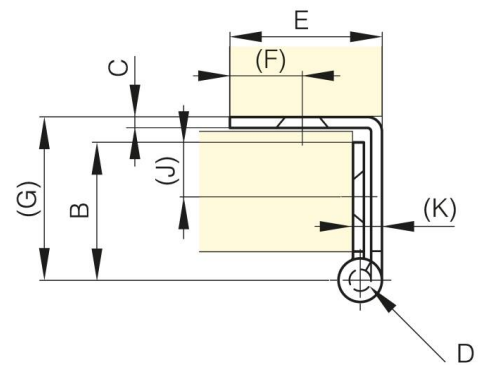
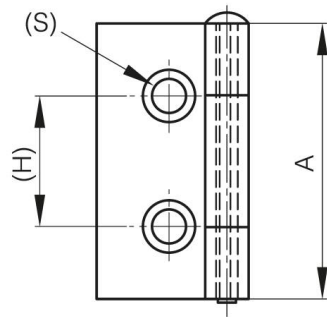
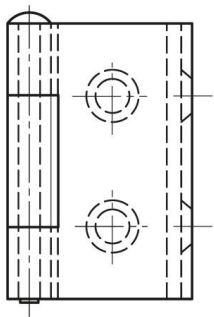
**SMALL BUTT HINGES WITH ONE
CRANKED LEAF AND REMOVABLE PIN 38
MM**

60-1-3331

Removable pin.

A	38 mm
---	-------

Material	steel
Weight (g)	31 g
B	19 mm
C	1.5 mm
S (hole diameter)	4 mm
E (knuckle or thickness)	17 mm
D (pin diameter)	3
F (pitch)	8 mm
G (pitch)	23 mm
H (height or starting holes)	26 mm
Finish	chrome plated
Pin material	nickel plated steel
J	7 mm



K	3.5 mm
----------	--------