



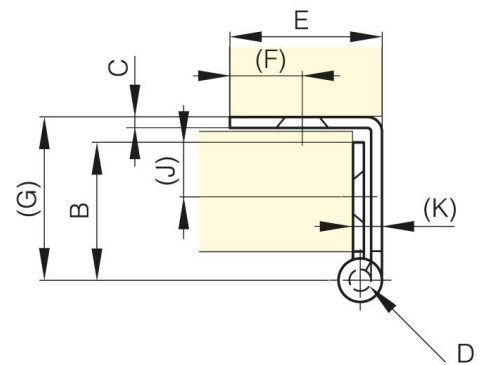
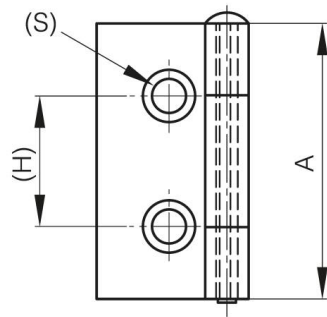
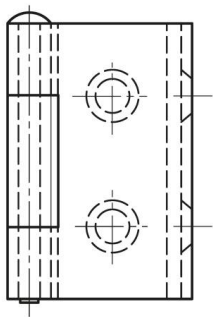
**SMALL BUTT HINGES WITH ONE
CRANKED LEAF AND REMOVABLE PIN 38
MM**

60-1-3342

Removable pin.

A	38 mm
---	-------

Material	steel
Weight (g)	31 g
B	19 mm
C	1.5 mm
S (hole diameter)	4.7 mm
E (knuckle or thickness)	21 mm
D (pin diameter)	3
F (pitch)	10 mm
G (pitch)	22.5 mm
H (height or starting holes)	18 mm
Finish	black cataphoresis
Pin material	raw steel
J	7.5 mm



K	4 mm
----------	------