

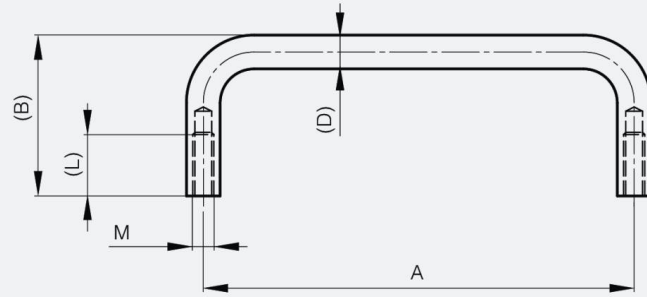


## **REAR MOUNTED GRAB HANDLES 52 TO 120 MM**

**19-7-3683**

<b>A</b>	52 mm
<b>Material</b>	aluminium
<b>Weight (g)</b>	14 g

<b>B</b>	34 mm
<b>D (pin diameter)</b>	8
<b>Finish</b>	clear anodised
<b>L</b>	10 mm



<b>M</b>	4 mm
----------	------