



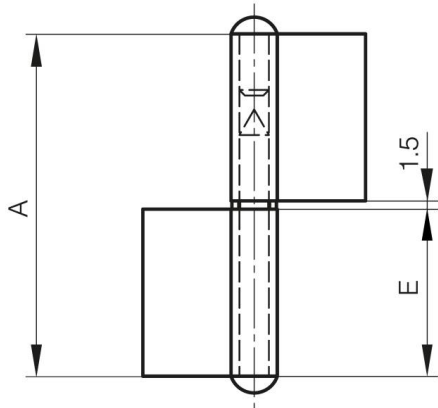
FLAG HINGE WITH WASHER - FLAT KNUCKLE

12-1-3312

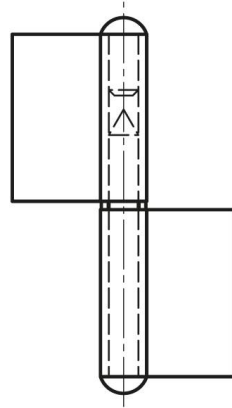
Flag hinge with brass washer, included separately.

A	61.5 mm
Note	type 1

Material	steel
Weight (g)	40 g
B	40 mm
C	1.5 mm
E (knuckle or thickness)	30 mm
D (pin diameter)	5.3
Finish	raw



12-1-3312 & 12-1-3314



12-1-3311 & 12-1-3313

