



## **FREIES ACHSENSCHARNIER A**

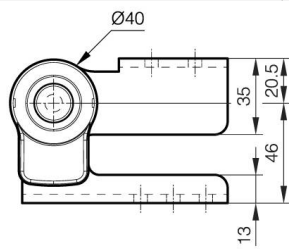
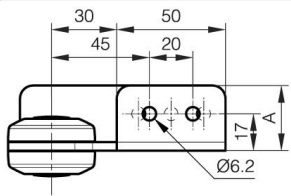
**15-7-3568**

Es wird empfohlen, das Scharnier mit freier Achse mit dem Mehrwinkelscharnier A mit Verriegelung (15-7-3566 oder 15-7-3567) zu kombinieren.

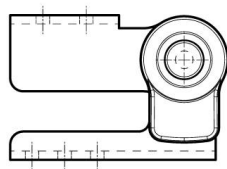
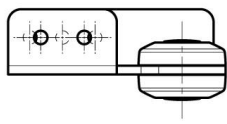
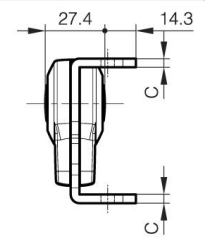
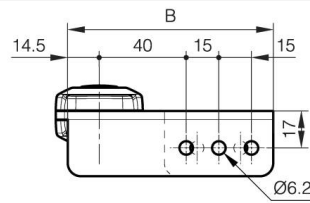
Empfohlene Schrauben: M5.

|                   |       |
|-------------------|-------|
| <b>A</b>          | 30 mm |
| <b>Ausführung</b> | Typ 1 |

|                           |              |
|---------------------------|--------------|
| <b>Material</b>           | Stahl        |
| <b>Gewicht (g)</b>        | 351 g        |
| <b>B</b>                  | 94.5 mm      |
| <b>C</b>                  | 4 mm         |
| <b>Dekor</b>              | vernickelter |
| <b>Nouvelle référence</b> | NEW          |



15-7-3568



15-7-3569

