



## **FREIES ACHSENSCHARNIER A**

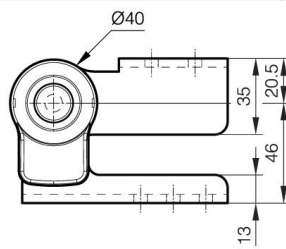
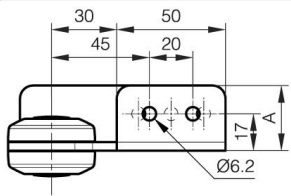
**15-7-3569**

Es wird empfohlen, das Scharnier mit freier Achse mit dem Mehrwinkelscharnier A mit Verriegelung (15-7-3566 oder 15-7-3567) zu kombinieren.

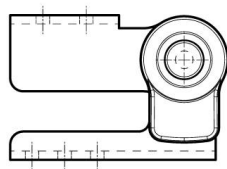
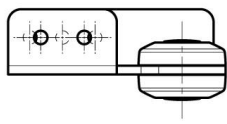
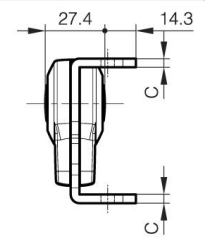
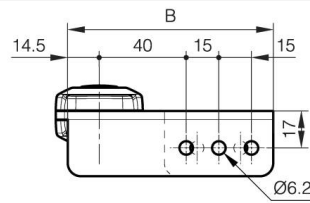
Empfohlene Schrauben: M5.

<b>A</b>	30 mm
<b>Ausführung</b>	Typ 2

<b>Material</b>	Stahl
<b>Gewicht (g)</b>	351 g
<b>B</b>	94.5 mm
<b>C</b>	4 mm
<b>Dekor</b>	vernickelter
<b>Nouvelle référence</b>	NEW



15-7-3568



15-7-3569

