

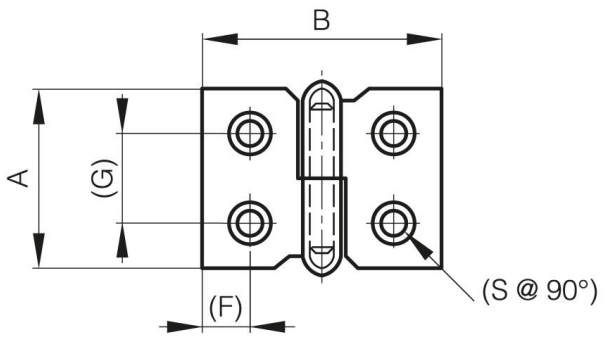


FITSCHBÄNDER LÄNGE 30 MM

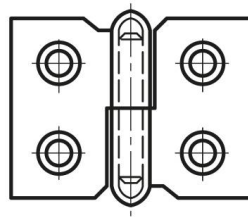
14-7-3391

A	30 mm
Ausführung	Typ 2
Material	Stahl
Gewicht (g)	16 g

B	40 mm
C	1.2 mm
S (Lochdurchmesser)	3 mm
D (Durchmesser)	4
F (Abstand)	7.7 mm
G (Abstand)	15 mm
Dekor	vernickelt



14-7-3390



14-7-3391

